

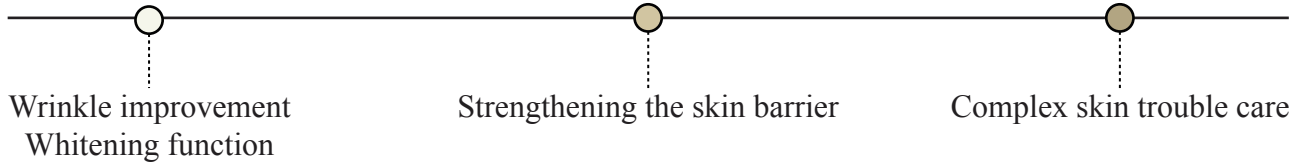


Cool Collection



# HOPE CREAM Care

HOPE CREAM Total Skin Care is a total anti-aging care that solves various and complex problems of the skin at once, making it a youthful skin that blooms again.



## Concept ingredients



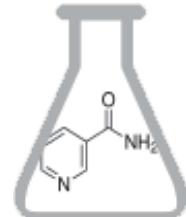
Edelweiss callus  
culture extract  
**Antioxidant**  
**Anti-inflammatory**



Snow Lotus Extract  
**Nutrition supply**



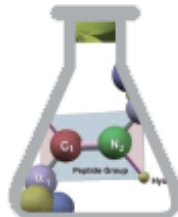
Shea butter  
**Prevention of damage**  
**Moisturizing**



Niacinamide  
**Whitening function**



Adenosine  
**Anti-wrinkle functionality**



Palmitoyl Tri Peptide-5  
**Skin regeneration, prevention of aging**



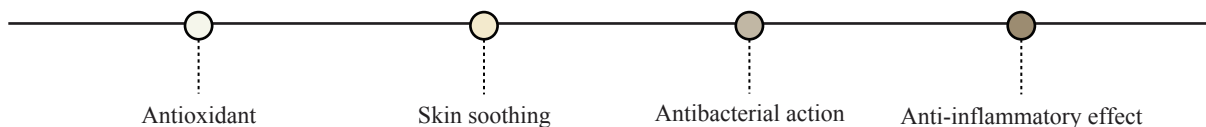
Red ginseng extract  
**Antioxidative effect**



Sea Swallow House  
(Golden Lotus Nest) Extract  
**Moisturizing, skin protection**

## Ingredient characteristics-Edelweiss callus culture extract

- Edelweiß (Edelweiss means “noble white” in German)
- Distribution:Alpine regions of Europe including the Alps
- The fine hairs of the flower part have been developed to withstand the cold and dry alpine weather.
- Edelweiss in folk medicine:Efficacy for use in abdominal and respiratory diseases
- Antioxidant effect:Known that antioxidant effect is twice as good as vitamin C
- UV protection:Substances such as bisabolane, Sitosterol, Tannin, Chlorogenic acid, etc.  
Protects the skin from the sun and has anti-aging effects.



**Edelweiss callus culture extract**  
(Patent No. 10-10-1145394)



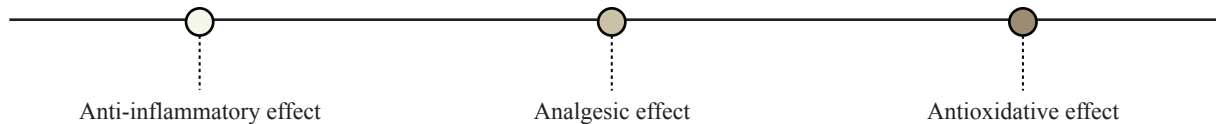
## Ingredient Features-Snow Lotus Extract

-Snow Lotus, a medicinal herb of the emperor that grows in high altitudes over 4,000m above sea level. Snow Lotus is a noble plant that grows in harsh environments.

It takes about 6 to 8 years to sprout and bloom in full bloom.

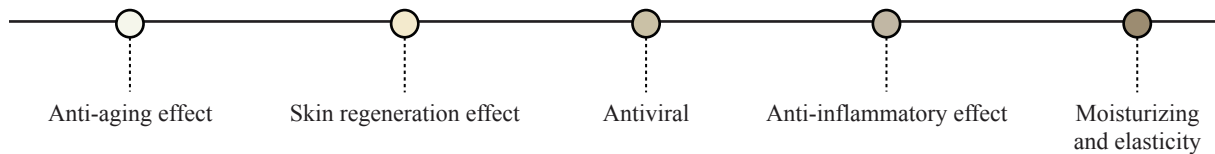
-Mystical flower that it contains useful ingredients for the human body, so that all people and animals around the flower will not get sick.

-In particular, fermented snow lotus extract has higher efficacy of existing ingredients and has a higher skin absorption rate than its smaller particle size.



# Ingredient Features-Sea Swallow's Nest Extract

- Bird nest refers to a nest made of saliva of a small swallow called 'Geumsayeon', which is mainly inhabited in Southeast Asia.
- Contains a large amount of proteins, amino acids, sugars, minerals and sulfated substances, and is reported to have effects such as promoting cell regeneration and enhancing immunity, so it is effective in nutritional and health promotion, and in anti-aging and skin.
- In addition, the bird's nest is rich in proteins, carbohydrates, and various minerals, and it is reported that it is excellent not only in skin soothing effect, but also in antiviral, cell proliferation and anti-inflammatory effects. And it is known that it is also effective in elasticity.



해비집과 병을 포함 약용식품 유래 특발발효추출물의 피부진정 효과

김민정

2021.04.28

2021.04.28

2021.04.28

2021.04.28

2021.04.28

2021.04.28

2021.04.28

2021.04.28

2021.04.28

2021.04.28

2021.04.28

2021.04.28

2021.04.28

2021.04.28

2021.04.28

2021.04.28

2021.04.28

2021.04.28

2021.04.28

2021.04.28

2021.04.28

2021.04.28

2021.04.28

2021.04.28

**A PRELIMINARY STUDY ON IN VITRO EVALUATION OF ANTIVIRAL PROPERTIES OF BIRD NEST EXTRACT AGAINST ANIMAL CORONAVIRUS**

M.D.S.A. Derwin<sup>1</sup>, S.S. Arshad<sup>1\*</sup>, P. Mehrbod<sup>2</sup>, A.I. Kamaruddin<sup>1</sup>, F. Bande<sup>1</sup>, A. Jalila<sup>1</sup> and A.K. Fadziah-A'ini<sup>2</sup>

Faculty of Veterinary Medicine<sup>1</sup>, Institute of Biosciences<sup>2</sup>, Universiti Putra Malaysia, 43400 UPM Serdang, Selangor Darul Ehsan. suri@putra.upm.edu.my

**Introduction**

Bird's nest has become a commodity in Peninsular Malaysia and other regions in South East Asia. The nest is made up of the bird's saliva during nesting. There are several common species of swiftlet such as the *Aerodramus fuciphagus*, *Aerodramus maximus* and *Apus pacificus*. Malaysia is the second largest producer of bird nest in the world. The nest has been used for many years as remedy as well as traditional medicine and is common among the Chinese worldwide. The nest is allegedly able to cure a wide range of ailments ranging from enhancing complexion, alleviating asthma, and strengthening the immune system (1). However, the antiviral efficacy studies of bird nest are lacking on viral diseases except a study on influenza virus. Preliminary study shows that the bird nest is able to neutralize influenza viruses and inhibit the agglutination of erythrocytes (2). This preliminary research is to examine if the bird nest extract has antiviral properties against the feline infectious peritonitis virus in vitro.



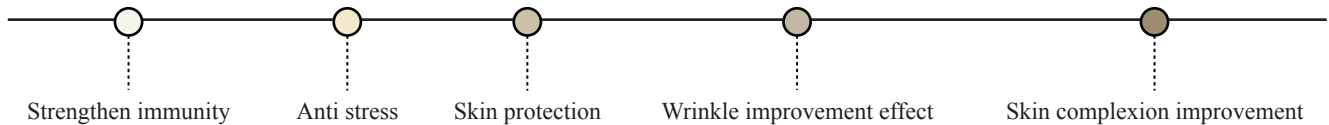
해비집과 병을 포함 약용식품 유래 특발발효추출물의 피부진정 효과, 건국대학교 석사학위논문(2012)

김민정, A PRELIMINARY STUDY ON IN VITRO EVALUATION OF ANTIVIRAL PROPERTIES OF BIRD

EXTRACT AGAINST ANIMAL CORONAVIRUS, Universiti Putra Malaysia

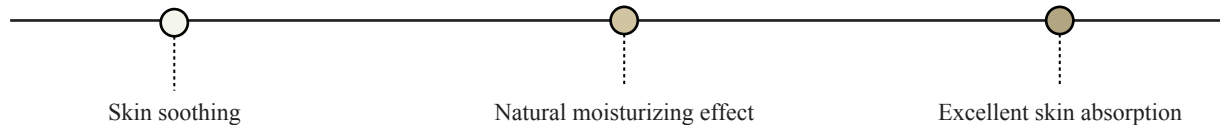
## Ingredient Features-Red Ginseng Extract

- Helps recover from skin stress and fatigue by promoting blood circulation.
- Smooths skin texture with the antioxidant action of saponin contained in red ginseng.
- Helps collagen synthesis, increases elastic fibers and helps to improve wrinkles.
- Brightens the complexion by relieving skin inflammation such as acne.
- Helps to make clean skin with excellent skin whitening effect.

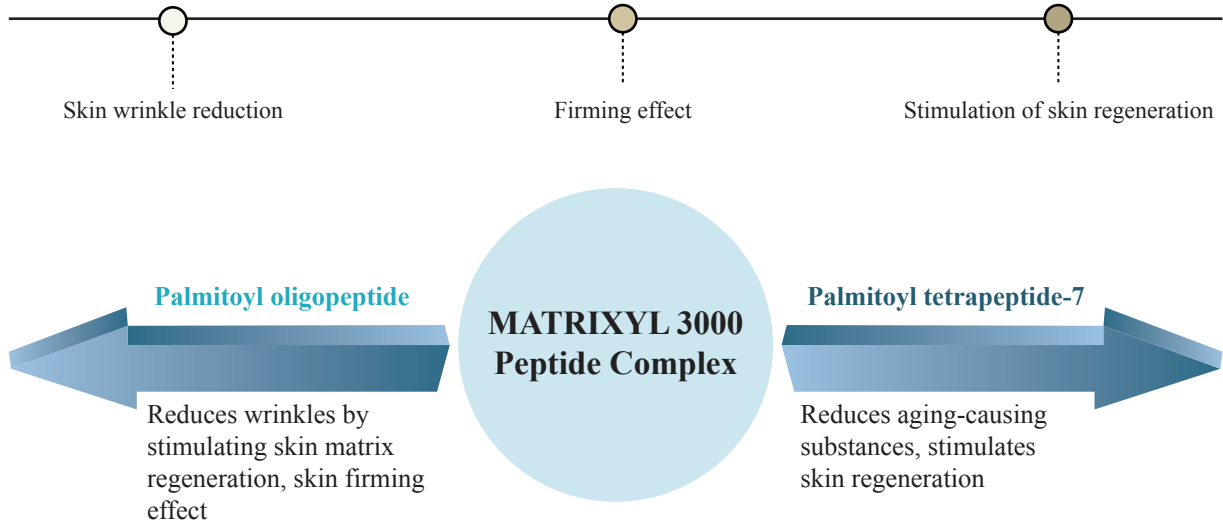


## Ingredient Features-Soybean Fermented Extract

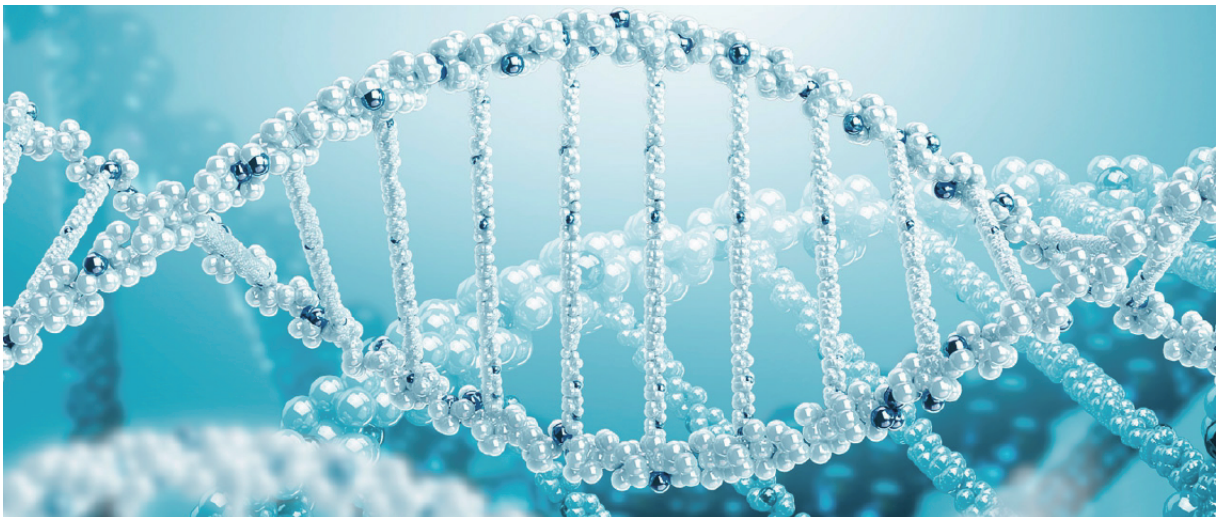
- Soybeans generally contain nutrients such as 35% protein, 17% fat and 31% carbohydrates, as well as phytochemicals, trypsin inhibitors, saponins, oligosaccharides, vitamin B groups, iron, and dietary fiber.
- There is isoflavon, which is structurally similar to the female hormone estrogen, and is effective in anti-cancer, hypertension, circulatory diseases such as arteriosclerosis, and osteoporosis.
- The mucous polymer material produced from fermented soybeans forms the basis of excellent moisturizing power. In this way, the rich nutrients of soybeans and ingredients obtained through the fermentation process are supplied as better nutrients to the skin.



# Ingredient Features-Peptide



## SYNERGY EFFECT





# HOPE Cream / 50g

Totally concentrated cream that makes skin full of elasticity and vitality



## 1. Product Features

- Wrinkle improvement & whitening dual functional cosmetics.
- Maintains a smooth and moist condition for a long time with a differentiated moisturizing feeling.
- Geumsayeon nest extract protects the skin barrier and cares for healthy skin.
- Gently wraps the skin and effectively cares for complex problems on the entire face.

## 2. Recommended target

- Those who want to make skin elastic by supplying oil and moisture.
- Those who feel tight even when applying moisture products.
- Those who want to solve complex skin problems at once.

## 3. Basic information



Concentrated cream type



Melt and absorb at skin temperature



Light floral scent

## 4. How to use

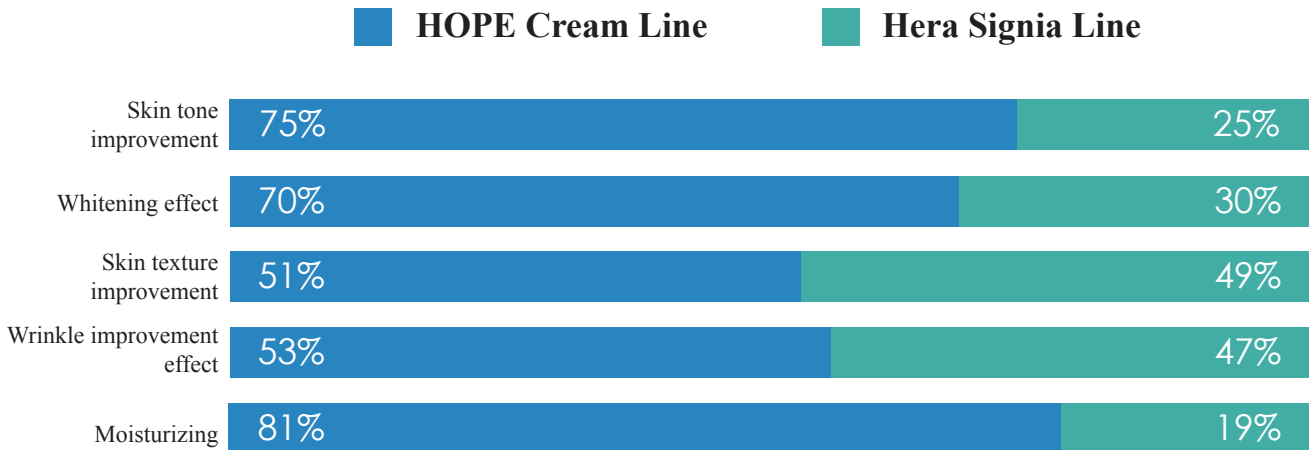
At the last stage of skin care, take an appropriate amount and gently spread over the face and neck, and pat it to be absorbed.



Hygiene permit completed

## Comparing other products

### “Whitening / wrinkle improvement blind test ”



### Blind test results

As a result of comparing the Hope Cream line and the Hera Signia line for 3 weeks with 30 women in their 0-30s, both products were dual functional cosmetics that helped with skin concerns, but the company's Hope Cream line moisturizes + wrinkle improvement + an opinion that I was more satisfied with taking care of various problems such as whitening at once.

## Before and after using the HOPE Cream skin care line

### Whitening/skin tone improvement effect

Before



After using the hope cream Line for more than 2 weeks on the spotted skin trouble area, it turned transparent and bright, and the overall skin tone was evenly ordered.

After



### Changes in skin texture through immediate moisture supply

Before



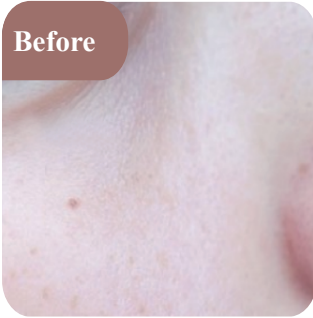
When I used the hope cream Line for more than 2 weeks on the skin that has no elasticity and has stretched pores, the over all skin has elasticity and the pores are also strengthened and the skin texture becomes dense.

After



## Skin elasticity, wrinkle improvement change

Before



The skin around the cheekbones was filled with elasticity, fine lines around the eyes were arranged, and deep wrinkles were improved, so you can see the skin texture that is smoother and more elastic than before.

After



## Changes in skin tone and moisturizing feeling

Before



The rough skin texture has been cleaned up, and the skin tone and troubles are cleansed with the rich moisturizing effect, so you can see that the complexion looks as clear and transparent as possible.

After





Cool Collection





**CD Co., Ltd.** has created a brand called **Cool Collection**, a differentiated product that breaks away from the existing stereotypes by taking advantage of the merits of being a design company.

Anything visible can be designed.

**CD Co., Ltd.** is a leading company that presents consumers '**Life style**' as a reality based on the creative spirit.



**CD CO., LTD.**

**[www.cocosmetic.co.kr](http://www.cocosmetic.co.kr)**

---

06080  
54-3, Bongeunsa-ro 105-gil, Gangnam-gu, Seoul, Republic of Korea  
T 02.792.3401 F 02.792.3402 E [cd@cdgroup.co.kr](mailto:cd@cdgroup.co.kr)